

## RACKS

### 4 Channel

#### FEATURES

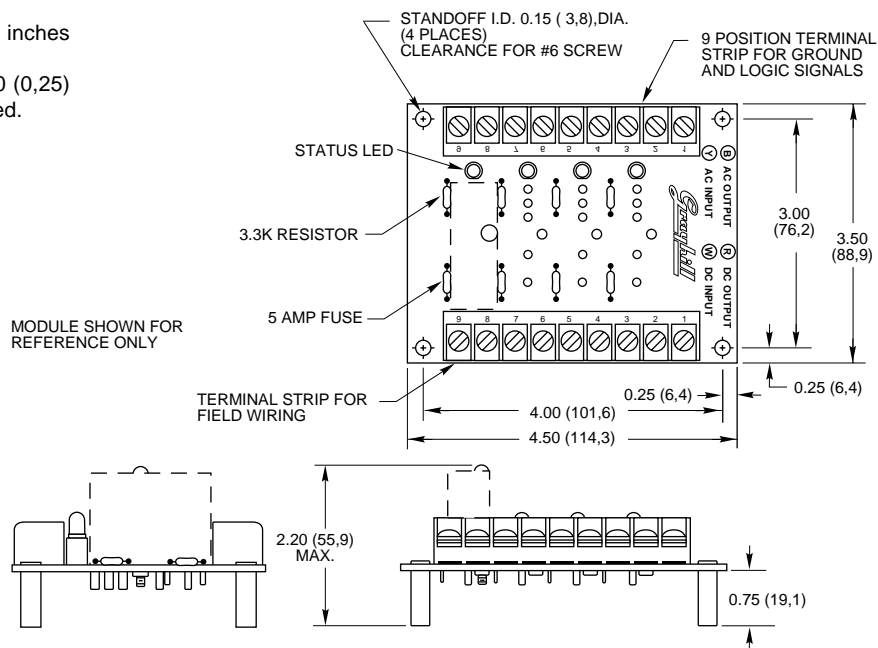
- Use for Isolating and Covering Signal Types to Standard Logic Voltages
- Terminal Block Connection for Input and Output
- Available for Standard and G5 I/O Modules  
(See p. H-4)
- Panel and DIN Rail Mount Versions
- UL, CSA Certified  
(see Engineering Information, p. H-3)



#### 4 CHANNEL RACK: Standard

##### Part No. 70RCK4

Dimensions are shown in inches (and millimeters).  
All tolerances are  $\pm 0.010$  (0,25) unless otherwise specified.



#### 4 CHANNEL RACK: G5

##### Part No. 70GRCK4

Dimensions are shown in inches (and millimeters).  
All tolerances are  $\pm 0.010$  (0,25) unless otherwise specified.

